



# L4 TAG



Manufacturer	MOTORI SEVEN DI BENEDETTI OSCAR
Make	MOTORI SEVEN
Model	L4 TAG
Inlet type	REED VALVE
Number of pages	11

## PHOTO OF ENGINE



DRIVE SIDE OF ENGINE



OPPOSITE SIDE OF ENGINE

## Official Signature and Stamp

**MOTORI SEVEN**  
 di BENEDETTI OSCAR  
 Via Perticara, 130  
 47023 CESENA - FC  
 Part. IVA 03110790403



# L4 TAG



## TECHNICAL INFORMATION

A	CHARACTERISTICS		
		Measurement	Tolerances
Volume of cylinder		124.58 cm <sup>3</sup>	125 cm <sup>3</sup>
Original bore		54.00 mm	
Theoretical maximum bore		54.08 mm	
Stroke		54.40 mm	
Cooling system		Water cooled	
Number of carburation system		1	
Number of transfer ports / ducts, cylinder / sump		5	
Number of exhaust ports / ducts		3	
Shape of the combustion chamber		Spherical – with squish	
Length between axes of the connecting rod		110mm	±0,1mm
Minumum weight of connecting		122g	±10g
Volume of combustion chamber		9,5 cc	Minimun

B	MATERIAL	
Cylinder	<i>Alluminium AL-SI</i>	
Connecting rod	<i>Steel Ni cr mo</i>	
Crankshaft	<i>Steel Ni cr mo</i>	
Head	<i>Alluminium AL-SI</i>	
Crankcase	<i>Alluminium AL-SI</i>	

C	OPENING ANGLES	
Exhaust		Max 182°



# L4 TAG



## DRAWING OF THE CYLINDER DEVELOPMENT

Chord reading  $\pm 0,3\text{mm}$

B = 52.8 mm

C1 = 21.7 mm

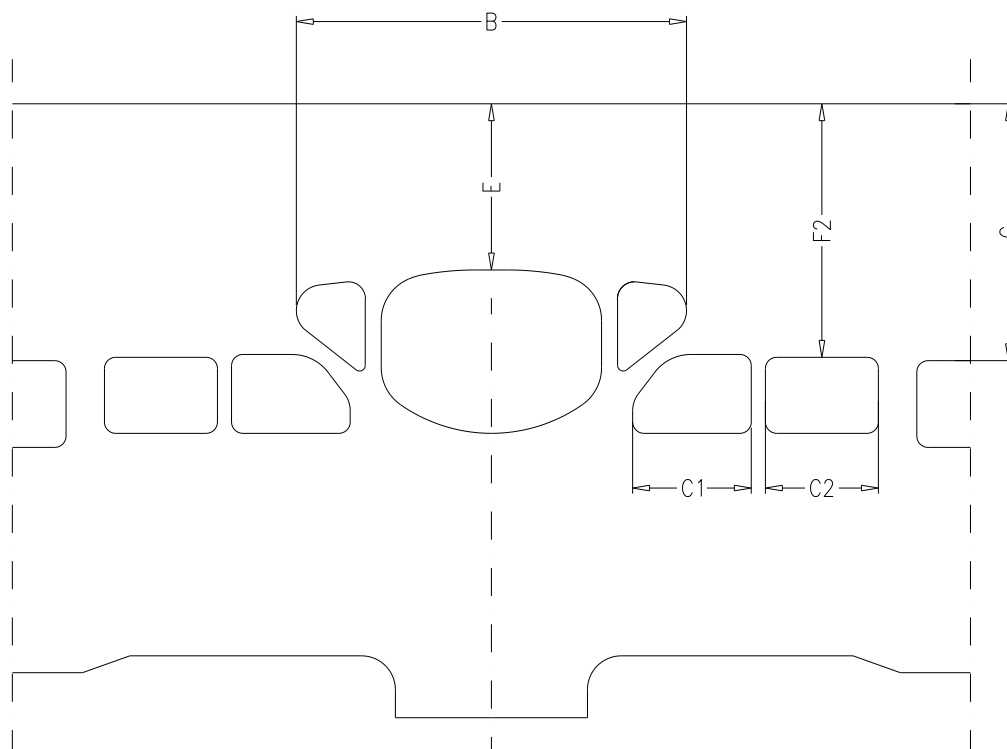
C2 = 21.7 mm

Angular reading by inserting a 0.2mm gauge

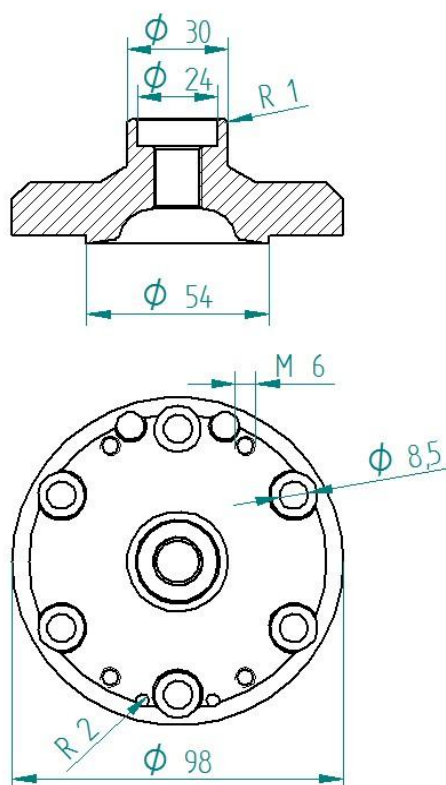
E = 33.2 mm MAX

F = 44.3 mm MAX

G = 44.3 mm MAX



DRAWING OF THE CYLINDER HEAD AND THE COMBUSTION CHAMBER ( $\pm 0,3\text{mm}$ )







# L4 TAG

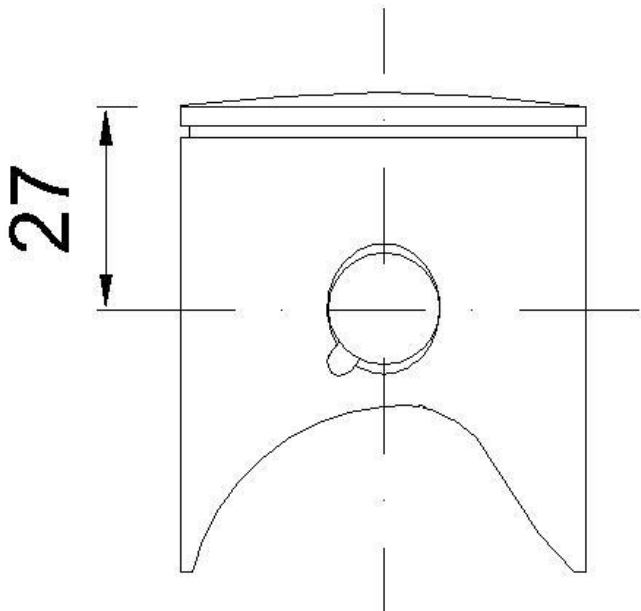
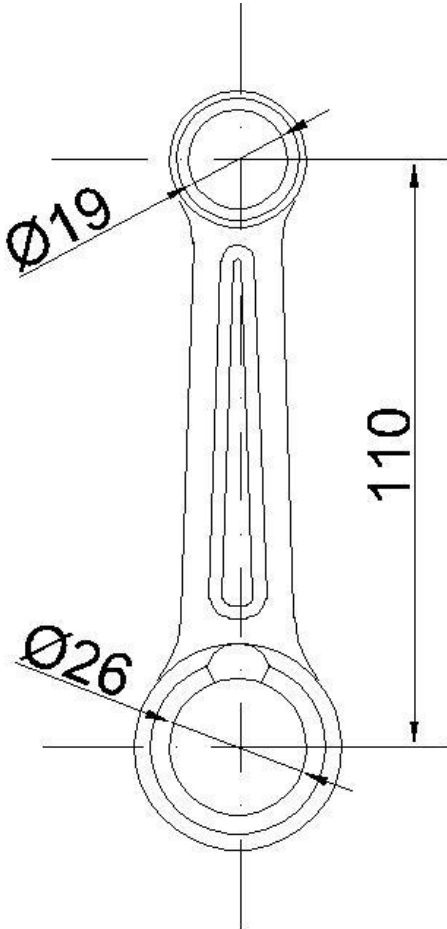


IGNITION	
Manufacture : PVL	
ROTOR: <u>950</u> STATOR: <u>1011</u>	IGNITION: <u>105 458</u> / <u>500 178</u> / <u>500 118</u>
	
	



# L4 TAG



PISTON	CONNECTING ROD
 <p>27</p> <p>Weight= 120 g <math>\pm</math> 10 g</p>	 <p>Ø19</p> <p>Ø26</p> <p>110</p> <p>Weight= 124 g <math>\pm</math> 10 g</p>



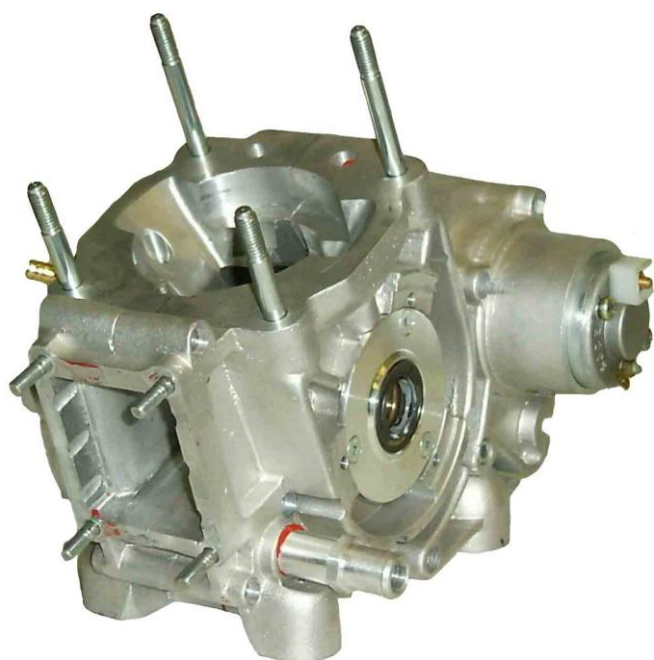
**PHOTO OF THE BASE OF THE CYLINDER**



**PHOTO OF COMBUSTION CHAMBER**



**PHOTO OF THE SUMP (GASKETS FACE)**



**PHOTO OF THE INTERNAL PART OF THE SUMP**







# L4 TAG

PHOTO OF THE BACK OF THE ENGINE



PHOTO OF THE FRONT OF ENGINE



PHOTO OF THE ENGINE TAKEN FROM ABOVE

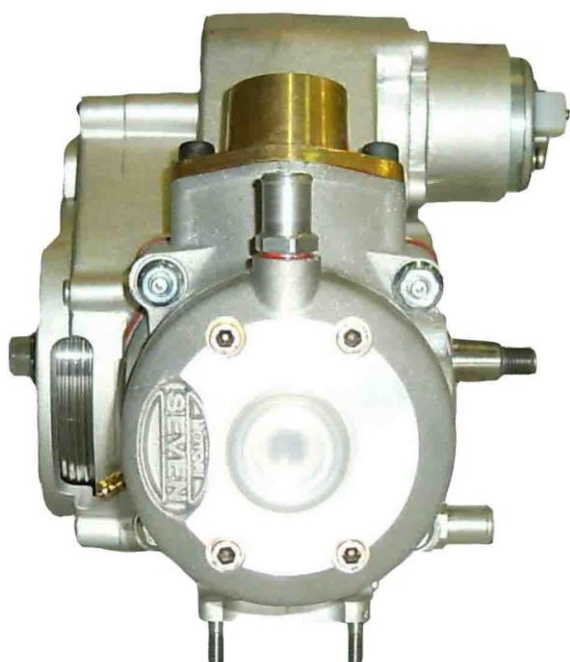
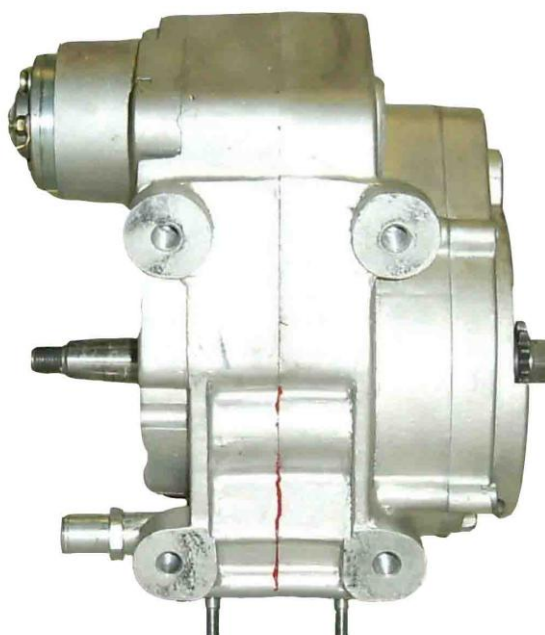
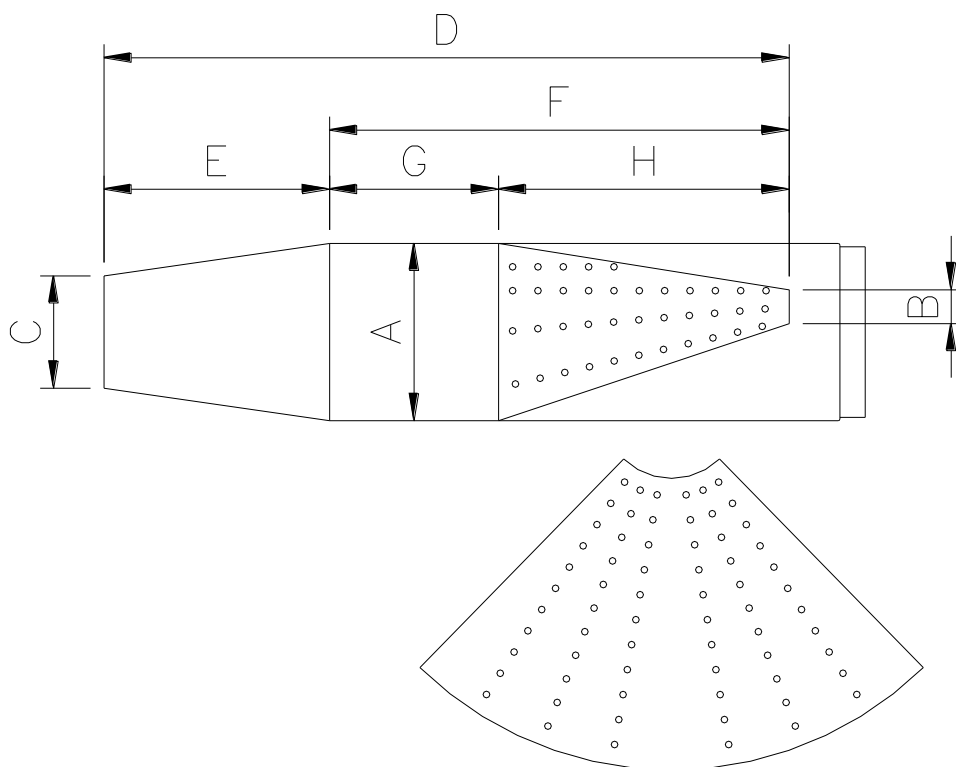


PHOTO OF THE ENGINE TAKEN FROM BELOW



## DRAWING OF THE SILENCER AND IT'S COMPONENTS



MEASUREMENTS: mm - tolerances  $\pm 1\text{mm}$

A: 115

B: 20

C: 66.5

D: 405.5

E: 133.5

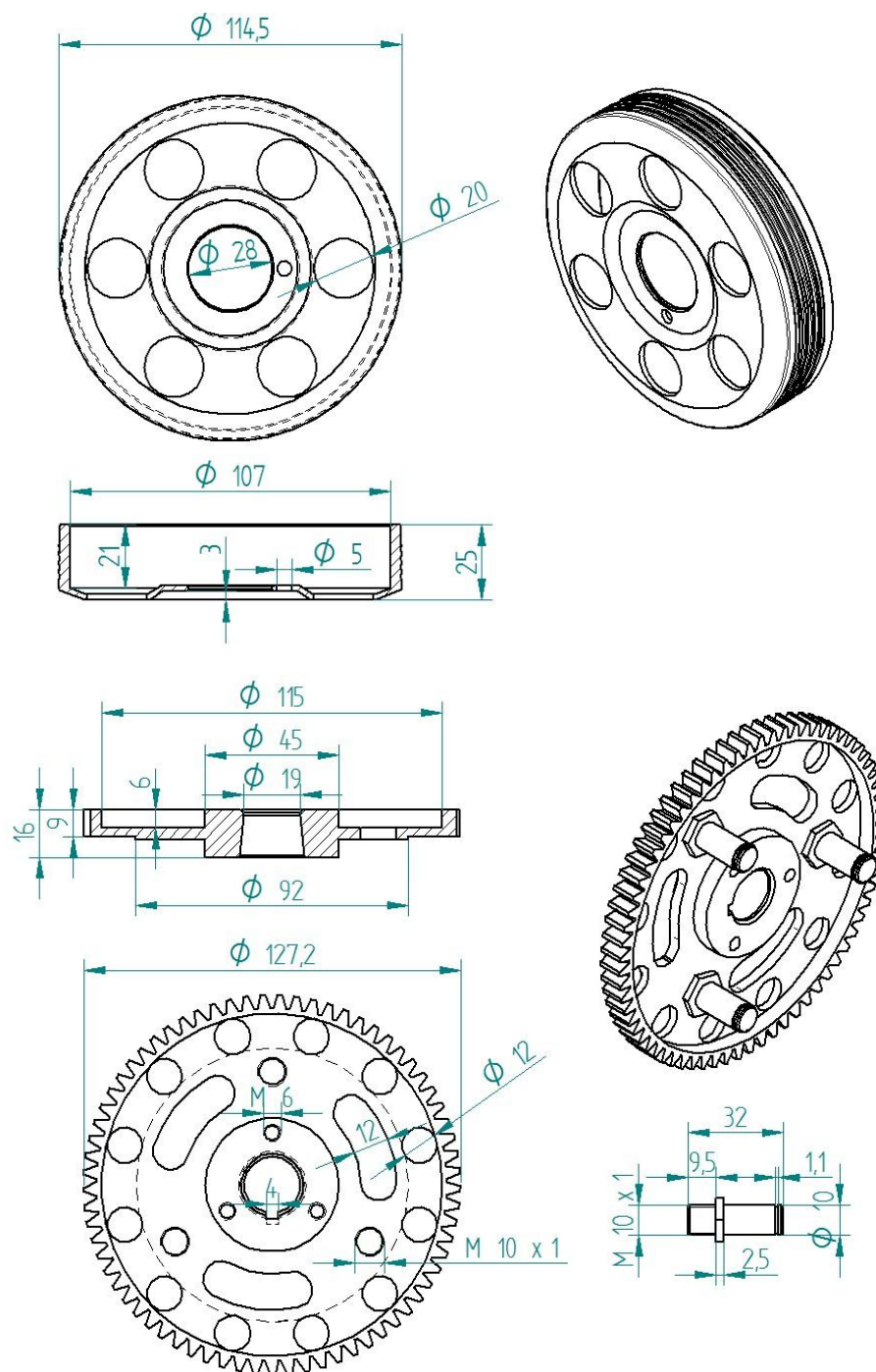
F: 272

G: 100

H: 172

# L4 TAG

## DRAWING OF THE CLUTCH



# L4 TAG

## DRAWING OF THE CLUCTH 2013

